



NEWave in Learning Training

Training Course

Smolyan, Bulgaria



**HUMAN
RESOURCE
DEVELOPMENT
CENTRE**

OFFICIAL GUIDE

Training course

NEWave Training

Smolyan, Bulgaria, 14-27.03.2019

SUMMARY OF THE TRAINING

IMPORTANT DATES

PROGRAM AND ELEMENTS

SELECTION OF PARTICIPANTS

TRAVEL INFORMATION

VENUE

ACCOMMODATION AND FOOD

PROJECT PARTNERS

USEFUL INFORMATION

2016-1-BG01-KA204-023812



Erasmus+

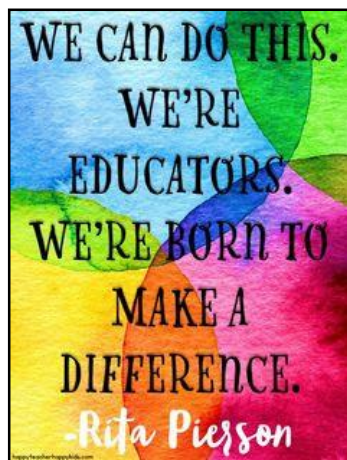
Hello dear friends,



In the following pages, we have summarized the information you need to know about our training course which is part of the project “NEWave in Learning”.

We are very glad that you have decided to participate in our project and therefore we will strive to offer a warm welcoming to you in the training course that will be held between 14th - 27th of March, 2019 in Smolyan, Bulgaria.

If you have further questions,
do not hesitate to contact us at:
teodor@gudevica.org

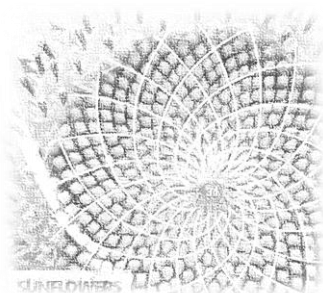


Erasmus+

Summary of the training

The NEWave Training will be a long learning process - a combination of online preparation, a 14-days skill development training, and a follow-up for application and evaluation of results. More than 15 adult teachers and trainers from 4 countries will participate in the training.

NEWave in Learning is based on **Prof. D-r Georgi Lozanov's** work on **suggestopedia**, **desuggestopedia** and **reservopedia** and the development of accelerative learning in the past **40 years**. The **suggestopedia** become famous more than 50 years ago from a group experiment with adults who **remembered 98% of 1000 unknown foreign language words in one day**. Since then hundreds of researches explore, show and prove its results and develop its methodology. Now we have gathered this **huge research** together and we will put it into practice in **adult learning and training**. Be part of this amazing journey that will **transform your work**.



Erasmus+



Summary of the training

Specific goals

At the end of the training,
participants will:

Analyze and construct a **rich multisensory training environment**.

Establish **sustainable connections** between the fields of knowledge.

Define ways for identifying and using the various

Multiple Intelligences and **Learning styles** of the.

Design training programs based on **NEWave Methodology**.

Use easy but **powerful strategies** and principles of **Accelerated Learning**.

Identify and use the **four stages** of the **Reservopedia cycle** of learning.

Define, analyze and **apply** the methodology of **reverse planning** and the **13-step model** for session design.



Working process

1. Preparation (distance learning)

Online materials and webinars are used during the preparation. During this part you will gather **information**, establish contacts with the other participants and trainers, and initiate your **individual preparation** process.

2. Training (14-days training 14-27.03.2019 in Bulgaria)

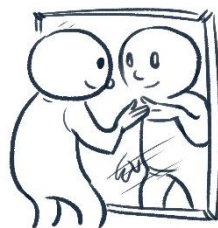
This is the time to deliver and develop a specific set of **practical skills** related to **NEWave in Learning Methodology**.

3. Follow-up (application of the results)

After the training you will **design and implement** training course for adults using the NEWave in Learning Methodology. The trainers team will support you in this process.



Erasmus+



Important dates

Until 15th January, 2019 /
[Application form](#) submission.

15-31st January, 2019 / Selection
of participants.

1-28th February, 2019 / Online
preparation and assignments.

1-10th March, 2019 / Practical
preparation for the travel and the
training.

14th March, 2019 / Arrival day in
Bulgaria.

April-July, 2019 / Follow-up
process.



Erasmus+



The Elements

Assessment **NEWave interview** – to identify trainers/teachers aims, skills and behaviors.

Social and accelerative learning – related to values and principles of **humanistic pedagogy**, adult learning and training delivery.

Performing **practical tasks** related to training theories and tools such as teaching-training-facilitation mode, session and lesson design etc.

Refining the performed tasks through **analysis** and **feedback**.

Designing, developing and demonstrating in practice a **training session/lesson**;

Design of a complete **learning process** – as a final task to the group to demonstrate what they have learned (identification of needs and target groups, preparation and design, creation of a powerful environment, conduction of sessions/lessons, evaluation of the results and follow-up).

Reflecting on experiences through Suggestive barrier groups – daily group reflection for evaluation of the what was learned so far and **Self-evaluation** with the support of various tools and methods.



Erasmus+

The program

The **NEWave Training** process is a **complex** and **demanding venture**. We will support, provide and give all the participant's the opportunity and the environment for **personal development**, knowledge and development of **practical skills**. For this reason, we believe that the process of training and assessment of trainers involved in the field of adult education and training should follow a complex pattern.

The process consists of a **1-month preparatory period**, **14 days residential training** in Bulgaria and **up to 4 months** of follow-up and implementation of the learning outcomes.

We will send the full program to all applicants!

The training course will be fully implemented in **English!**



Erasmus+



Selection of participants

The training course target group:

teachers, educators and trainers

who **actively work** in the field of **adult learning**.

MAX № of participants: **20**

Participants per country: **5** from **Spain**, **5** from **Italy**, **5** from **Macedonia** and up to **5** from **Bulgaria**.

APPLY HERE ;)



Erasmus+



Travel Information

Partner organizations in Italy, Spain and Macedonia will support you with the booking of your travel. Please contact the responsible persons for your country.

If you plan to arrive earlier or leave later and you need to find an accommodation, let us know, so that we can support you. **Your expenses out of the days of the training will not be** reimbursed by the organizers.

The travel expenses (from your home town to the venue of the course - Smolyan) are **funded** by the project.

NOTE! The distance between Sofia and Smolyan is 250 km., or around 3.5 hours by bus.

You can contact the partner organization in your country for **more information and support**. Check page **Project partners**.



Erasmus+



Travel Info 2

Note, that **the booking paper alone is not enough to prove your travel expenses**. You should present as well the **boarding passes**, a bill, a slip of payment and print-out from your bank account to confirm the sum paid for your ticket.

Keep all travel documents you get during your trip: boarding passes, bills, slips, tickets etc., because we absolutely need them!

Taxi fares cannot be reimbursed.

Personal health. It is very important to notify us of any health risk or potentially needed medicines (if you do not note them in your application form, please let the team know about them as soon as possible via e-mail). The information you provide on any special needs does not leaves out your own personal responsibility for your own health.



Erasmus+



Venue

The town of Smolyan is located in the middle of Rhodopes, Southern Bulgaria. It lies 104 km South of Plovdiv and 98 km West of Kardzhali.



The town stretches over a huge part of the valley of Cherna River (Black River). The population of the town is approximately 32 000 people.



The Old Houses Architectural Complex at Cheshitska Quarter attracts the tourists' attention. This is the oldest quarter of Smolyan, consisting of impressive old houses built after 1835.



The largest Orthodox temple in Southern Bulgaria is also situated in Smolyan.

The oldest archaeological evidence discovered in Smolyan Region date back to the end of the Bronze Age – 13th century BC.



Erasmus+

Accommodation and food

The training course will take place in the mountain house of hotel "Moni":

<http://www.hotelmoni.com/>

Participants will be accommodated in the mountain house in **double** and **triple** bed rooms. Each room has a **bathroom**. Accommodation and full board meals (breakfast, lunch and dinner) **are covered** by the hosting organization.



Erasmus+



What to bring?

- Clothes and shoes suitable for **sports** and walking/**hiking**. This time of the year can be rainy, snowy and coldly.
- Your winter jackets, gloves, hats and **warm clothes**.
- Your **original tickets** for the entire trip, the **invoice** from the travel agency (the price clearly indicated on the ticket), **the boarding passes**.
- Your **travel insurance** contract and a legible copy of it.
- Your ID/**passport**.
- Your own **medications**.
- Something typical **about your country** such as food, drinks, music, traditional objects, promotional materials and whatever else you want to present.
- **Materials** about **your organization** and **your work**.
- **Your willingness** to reflect on your own skills, knowledge and attitudes.
- **Your motivation**, inspiration and energy for intense and hard work.
- Your spirit to share your **experience**, questions and doubts.

If you have special needs (diets, medicines, etc.) please, tell us beforehand if you will need assistance from us on this matter.



Erasmus+



Project partners

Bulgaria / Badeshte sega 2006 - Future now /

www.gudevica.org

teodor@gudevica.org

Macedonia / Triagolnik /

www.triagolnik.org.mk

zarko.trajkov@gmail.com

zarko.trajkov@triagolnik.org.mk

Italy / EURO-NET /

www.synergy-net.info

euro-net@memex.it

Spain / BIDERBOST BOSCAN & ROCHIN /

<https://bbyr.com/en/>

aescamilla@bbyr.com



Erasmus+



Useful information

Located in South Eastern Europe, **Bulgaria** is bordered by Greece and Turkey to the South, Romania to the North and Macedonia and Serbia to the West. Its Eastern Border is formed by the beautiful Black Sea Coast. A country of outstanding natural beauty the environment remains unspoilt and is incredibly varied.

A relatively small country, a few hours drive will take you from the snow covered central Pirin mountain Ranges to the long sandy beaches of the Black Sea coast.

Forming the heart of several ancient civilizations Bulgaria's rich culture is reflected in a vast number of architectural treasures.

Throughout the country you will find ancient Greek sites, Roman amphitheatres and Byzantine churches. The country is home of 160 monasteries, 36 cultural centres and 40,000 listed archaeological monuments. Nine sites have achieved a coveted place in the UNESCO World Heritage list.



Erasmus+

| Short visit card

CAPITAL CITY IS **SOPIA**

OFFICIAL LANGUAGE IS **BULGARIAN**

THE **CURRENCY** IN REPUBLIC OF BULGARIA IS
"LEV". THE EXCHANGE RATE TO EURO IS FIXED:
1 EUR = 1.95583 BGN.

THE AVERAGE **TEMPERATURE** IN MARCH IN THE
MOUNTAINS AT 1300-1500m. ALTITUDE IS
0-20 DEGREES CENTIGRADE.

EMERGENCY NUMBER: 112

Contact the hosting team:

Teodor **Vasilev**

teodor@gudevica.org

+359887558476



Erasmus+

